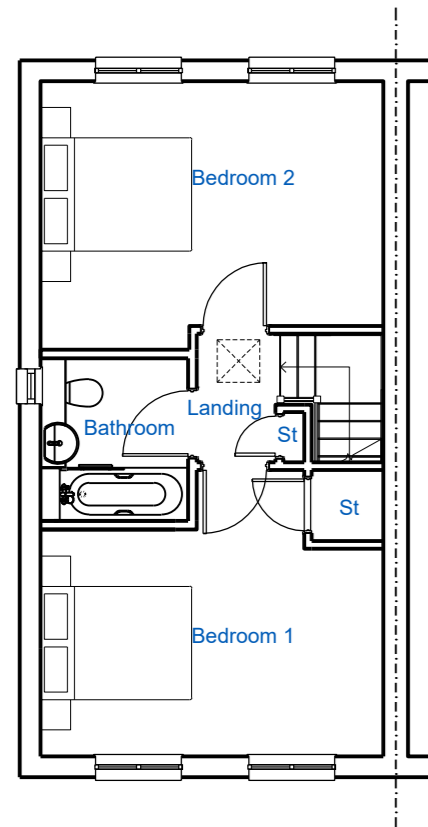


This drawing is the copyright of Roberts Limbrick Ltd and should not be reproduced in whole or in part or used in any manner whatsoever without their written permission.

Do Not scale off this drawing, use only figured dimensions and report any discrepancies or omissions to the Architect immediately.

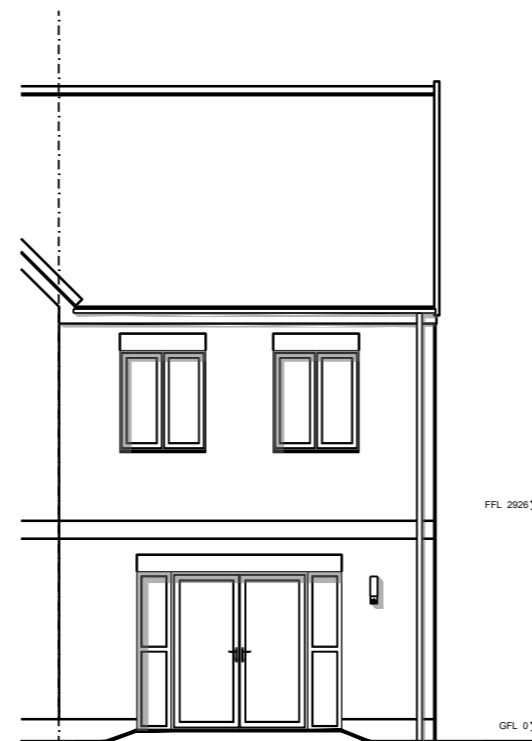
rev.	date	description
A	18/06/21	Main material revised to brick. Adjacent rendered Cardinham indicated adjacent to Holt.



FIRST FLOOR PLAN



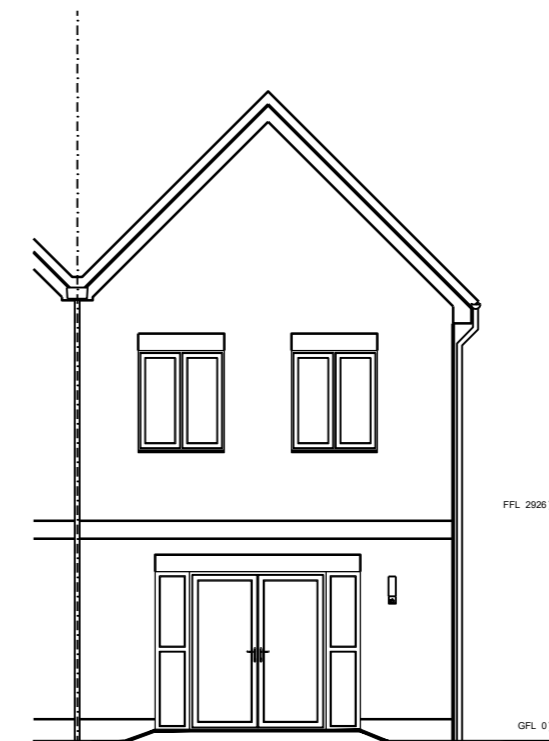
FRONT ELEVATION  
OP3 - 30° roof



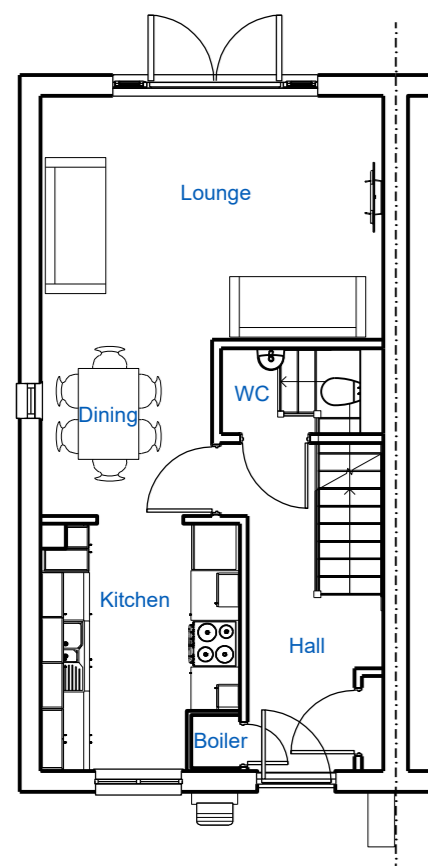
REAR ELEVATION



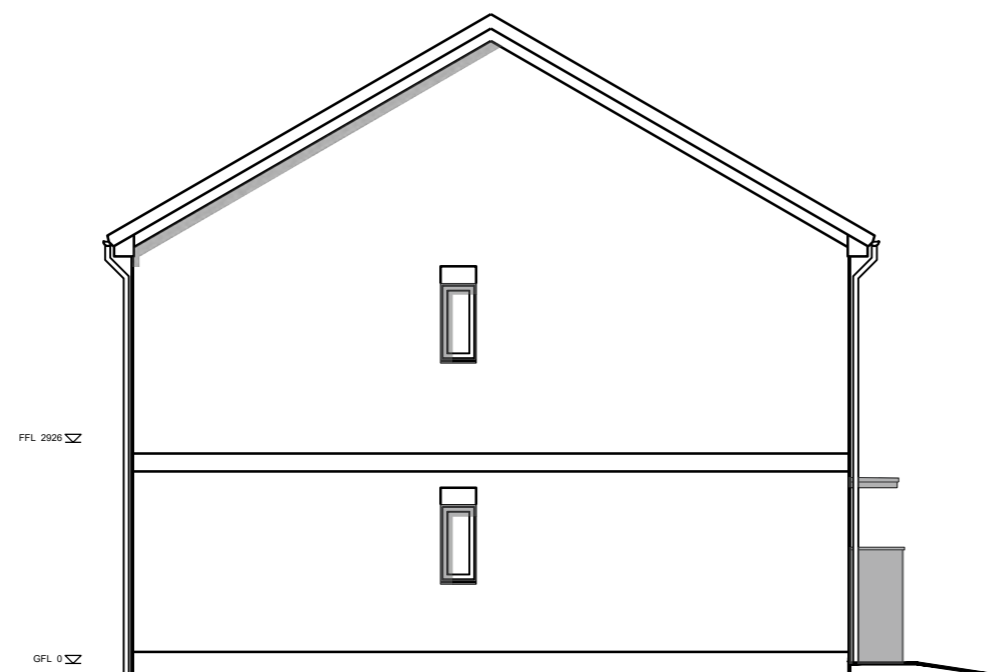
FRONT ELEVATION  
OP4 - Gable fronted  
Plot 204 only



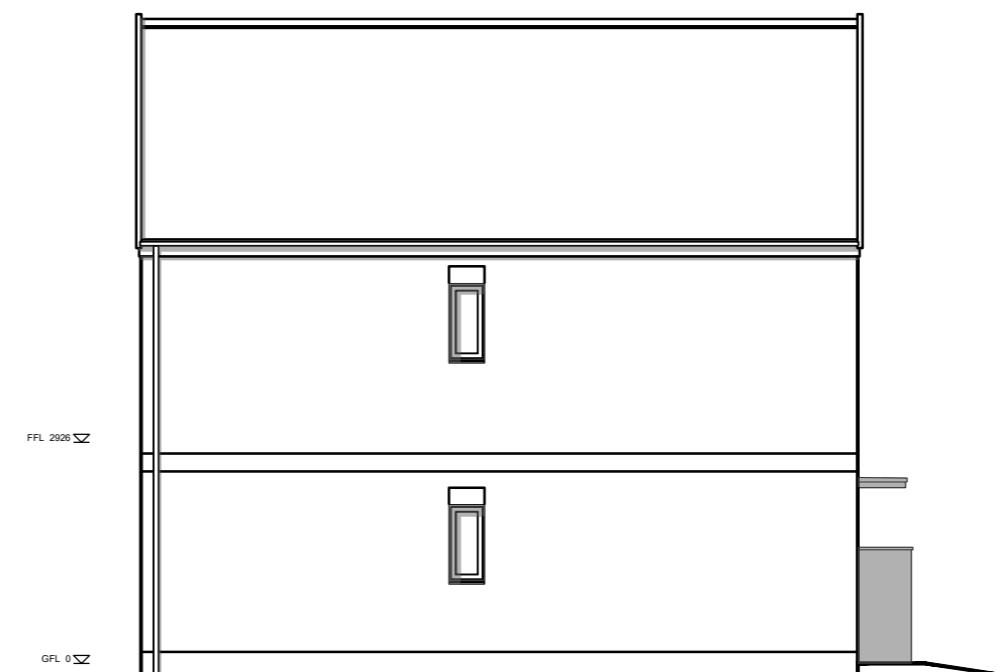
REAR ELEVATION



GROUND FLOOR PLAN



SIDE ELEVATION  
OP3 - 30° roof



SIDE ELEVATION  
OP4 - Gable fronted

**PLOTS**

As Drawn: 7, 25, 32, 69, 98, 106, 124, 128, 177, 214

Handed: 11, 21, 36, 52, 66, 86, 95, 180, 204, 220

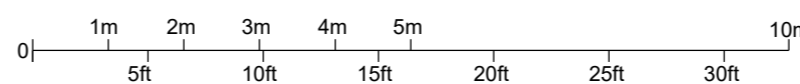
**MATERIALS LEGEND**

- Roof Tiles - 30 degree roof pitch - Marley Modern Interlocking Concrete Tiles
- Roof Tiles - 12.5 degree roof pitch - Metrotile Slate .900 Lightweight Steel Roofing - Terracotta

- Brick Units
- Main Brick GF - Red Multi Brick
- Main Brick FF/SF - Red Multi, Buff of Brown Brick
- Brick Detail & Banding - Red Multi or Buff Brick
- Render units
- Main Render - EPSITECH Render (05058206).
- Brick Detail & Banding - Red Multi

- Window Surrounds - Grey Aluminum or similar
- Brick below DPC - Red Multi Brick
- Rainwater Goods - Black uPVC
- Front Doors - Vista Panels Verona style, colour: mixed colours - Olive Green, Navy Blue, Maroon Red etc
- Window & Door Frames - Grey uPVC
- Front Door Canopies - Flat GRP Dark Grey
- Soffit & Fascia - Grey uPVC

Refer to Materials Plan for details



**project**

RESIDENTIAL DEVELOPMENT  
FOSSETTS WAY  
SOUTHEND-ON-SEA

**client**

ILKE HOMES

**drawing**

HOUSETYPE - HOLT  
PLANS & ELEVATIONS  
Sheet 2

**status**

PLANNING

**ROBERTS LIMBRICK LTD**

The Carriage Building, Bruton Way,  
Gloucester, GL1 1DG

The Estates Office, 25 - 26 Gold Tops,  
Newport, NP20 4PG

T. 03333 405 500

mail@robertslimbrick.com

www.robertslimbrick.com

Registered Office : England No. 06658029

**scale**

1/100 @ A2

**date**

26/03/21

**author**

RJ

project	drg no.	rev.
9913	PL23	A